



ST. MICHAEL THE ARCHANGEL  
CATHOLIC PARISH IN AURORA



# STEWARDSHIP REPORT

**JULY 1, 2022-  
JUNE 30, 2023**

“Each person should give as much as he has decided in his heart, not with reluctance or under compulsion, for God loves a cheerful giver.”  
(2 Corinthians 9:7)



***Thank you for your  
generosity!***

303-690-6797  
[www.stmichael-aurora.org](http://www.stmichael-aurora.org)  
[communications@stmichael-aurora.org](mailto:communications@stmichael-aurora.org)



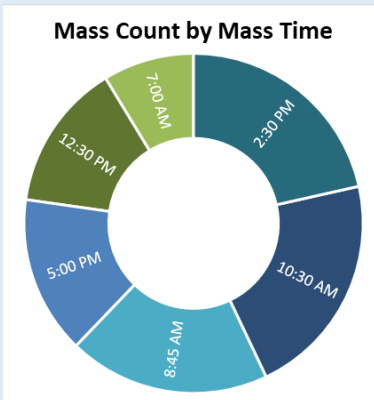
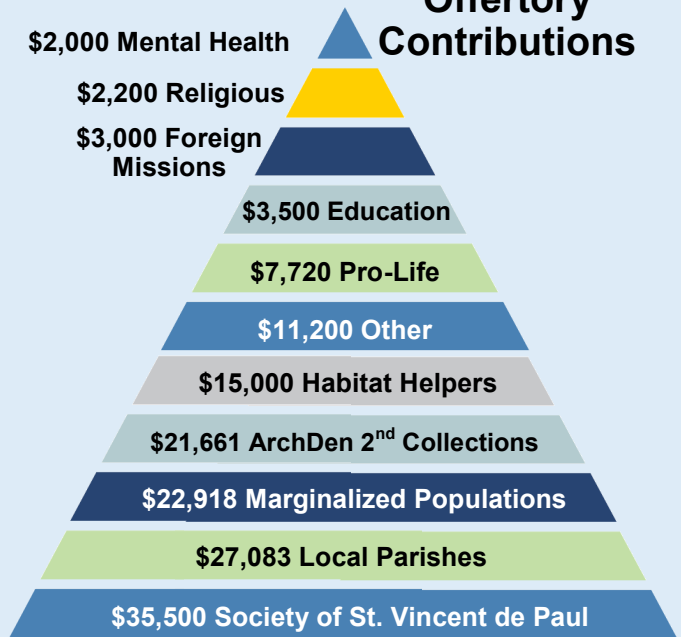


# Stewarding our Resources for Future Generations

## Capital Project Expenses

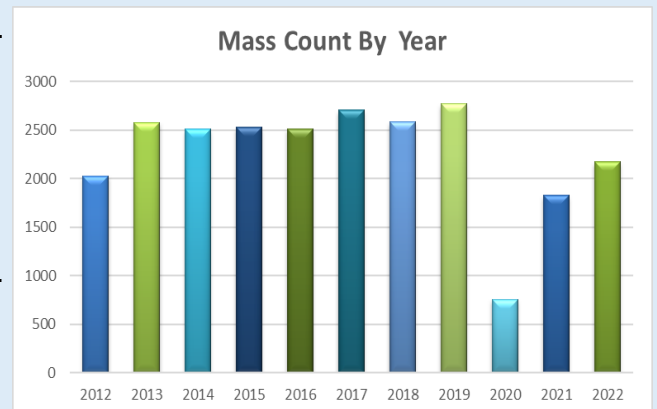
Rectory Interior Upgrades	\$ 6,921
Sacristy Countertops	\$ 3,706
Church Landscaping	\$ 7,676
Rectory Plumbing	\$ 7,756
Rectory Landscaping	\$ 9,161
Tree Pruning	\$ 27,600
West Fence Replacement	\$ 23,000
4 Interior Door Closures	\$ 3,115
Altar Railings for Safety	\$ 10,975
Rectory Exterior	\$ 63,740
Electronic Door Access	\$ 7,319
<b>Total Expended FY 22-23</b>	<b>\$170,970</b>

## Charity Donations from the Church Comprised 8% of Offertory Contributions



our parish community, enter into the faith more deeply. That inner pull is God, seeking to bring you closer to Himself. Encourage each other to answer the call.

Healing from Covid's influences, we are returning. No matter how long you've been away, no matter what the reason, you can always come home. Spread the word — come to Mass, become more involved in



# Planning the Use of Our Resources for Next Year

Dear friends,

As you read through this annual stewardship report of our parish, you should applaud yourselves for the incredible generosity you have demonstrated to your parish and the needs of others. Without your generosity, we could not have done the capital improvements that our older facilities needed; without your generosity, many people who do not have food to eat would not have been provided a meal; without your generosity, our youth would not have the resources to learn their faith; without your generosity, we would not even have the hosts and wine we need to celebrate the Eucharist.

So, what can I say but: thank you for loving the Lord, loving others, and loving your parish community through the sharing of your resources so we can do what we are called to do.

May the Lord bless you all abundantly!

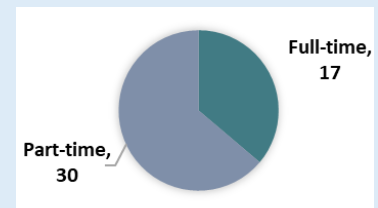
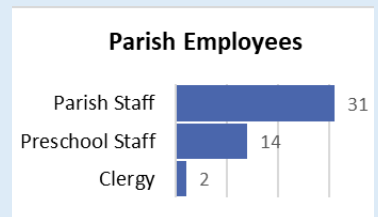
Your brother in the Lord,



Fr. Terry Kissell

## St. Michael the Archangel Parish Budget Fiscal Year End June 30, 2024

	June 30, 2024	
		% of Income
<b>REVENUES</b>		
Offertory	\$1,978,000	74%
Preschool	362,000	14%
Building & Maintenance Fund	207,000	7%
Interest and Investment Income	72,000	3%
Other Revenues	37,000	1%
Religious Education	27,000	1%
Youth Ministry	10,000	
Gifts	6,000	
<b>TOTAL REVENUES</b>	<b>2,699,000</b>	<b>100%</b>
<b>EXPENSES</b>		% of Expenses
Wage and Benefit Expenses (Religious, Program Directors, Administration, Maintenance)	1,060,000	41%
Preschool (Including Wages)	417,000	16%
Other Operating Expenses	239,000	9%
Catholic School Subsidies	157,000	6%
Maintenance and Repairs	149,000	6%
Archdiocesan Assessment	139,000	5%
Insurance	107,000	4%
Charity	99,000	4%
Educational & Other Programs (Religious Education, Music, Liturgy, Youth)	88,000	3%
Archdiocesan Retirement Assessment	70,000	3%
Utilities	90,000	3%
<b>Total Operating Expenses</b>	<b>2,615,000</b>	<b>100%</b>
<b>CHANGE IN NET ASSETS</b>	<b>\$84,000</b>	



**St. Michael the Archangel Parish**  
**Statement of Activities**  
**Modified Cash Basis**

	Fiscal Years Ended:			
	June 30, 2023		June 30, 2022	
<b><u>REVENUES</u></b>				
		<u>% of Income</u>		<u>% of Income</u>
Offertory	\$1,917,019	68%	\$1,847,217	73%
Preschool	373,309	13%	342,369	14%
Building & Maintenance Fund	208,634	7%	223,516	9%
Other Revenues	95,905	3%	87,242	3%
Auxiliary Organizations Collections	73,904	3%	75,609	3%
Interest and Investment Income	57,314	2%	2,046	
Market Value Increase/Decrease in Investments	57,162	2%	-80,815	-3%
Religious Education	25,301	1%	17,326	1%
Gifts	5,049		4,573	
Youth Ministry	4,418		9,157	
<b>TOTAL REVENUES</b>	<b>2,818,015</b>	<b>99%</b>	<b>2,528,240</b>	<b>100%</b>
<b><u>EXPENSES</u></b>				
		<u>% of Expenses</u>		<u>% of Expenses</u>
Wage and Benefit Expenses (Religious, Program Directors, Administration, Maintenance)	999,176	33%	954,217	38%
Preschool (Including Wages)	372,950	12%	341,331	14%
Other Operating Expenses	221,994	8%	180,144	8%
Archdiocesan Assessment	157,808	5%	141,996	6%
Catholic School Subsidies	148,612	5%	135,320	5%
Maintenance and Repairs	160,249	5%	112,972	4%
Charity	157,042	5%	87,257	3%
Insurance	85,560	3%	60,097	1%
Archdiocesan Retirement Assessment	68,623	2%	73,444	2%
Utilities	76,521	3%	66,841	3%
Educational and Other Programs (Religious Education, Music, Liturgy, Youth)	62,264	2%	68,270	3%
Auxiliary Organization Expenses	60,858	2%	66,980	3%
<b>Total Operating Expenses</b>	<b>2,571,657</b>		<b>2,288,869</b>	
Depreciation Expense	417,998	14%	231,333	10%
<b>Total Expenditures</b>	<b>2,989,655</b>	<b>100%</b>	<b>2,520,202</b>	<b>100%</b>
<b>CHANGE IN NET ASSETS</b>	<b>-\$171,640</b>		<b>\$8,038</b>	

*Act as if everything depended on you; trust as if everything depended on God*  
*St. Ignatius Loyola*



**St. Michael the Archangel Parish**  
**Statement of Financial Position**  
**Modified Cash Basis**

	June 30, 2023	June 30, 2022
<b><u>ASSETS</u></b>		
Cash and Cash Equivalents	\$461,051	\$503,126
Cash Held In Revolving Fund Trust	1,482,800	1,356,338
Investments	672,013	620,644
	<b>2,615,864</b>	<b>2,480,108</b>
Property & Equipment	6,394,976	6,672,726
<b>TOTAL ASSETS</b>	<b>\$9,010,840</b>	<b>\$9,152,834</b>
<b><u>LIABILITIES &amp; NET ASSETS</u></b>		
Total Liabilities	131,539	102,172
Total Net Assets	8,879,301	9,050,662
<b>TOTAL LIABILITIES &amp; NET ASSETS</b>	<b>\$9,010,840</b>	<b>\$9,152,834</b>